



Energy • Environment • Sustainability



ABOUT COMPANY

Ensavior Technologies Pvt. Ltd., headquartered in New Delhi, India was established in 2011 on the belief that smarter and healthier buildings require high performance engineering solutions by adopting best engineering practices keeping special emphasis on Economic, Environmental and Social Sustainability in forefront.

Ensavior is a leading brand in the building services industry offering a host of services from the conceptualization stage to implementation with excellence in quality and engineering services.

We are a full-service Design, Engineering, Sales, Maintenance and Manufacturing company, that promotes most advanced energy saving products and systems pertaining to Heating, Ventilation, Air Conditioning (HVAC), Public Health Engineering (PHE), Indoor and Outdoor Air Quality (IAQ & OAQ), and Fire.

With a combination of state of the art products and professional engineering expertise, We provide engineering solutions around “Water and Air” related to Building Services Sector.





WHAT WE DO – Our Services

Ensavior manages its business based on three diversified segments, within the building service industry:

- Distribution and Trading
- Manufacturing and Assembly
- After Sales Services and Maintenance

Ensavior believes in providing the most sustainable solutions to its clients and has a comprehensive training system to support them. The employees are constantly upgraded with the new innovative product solutions that come to the marketplace to think ahead and advise their clients better. The focus on giving outstanding satisfaction, exceptional service, and enhanced safety performance to its clients resulting in, Ensavior becoming a renowned partner of choice in the building services industry today.

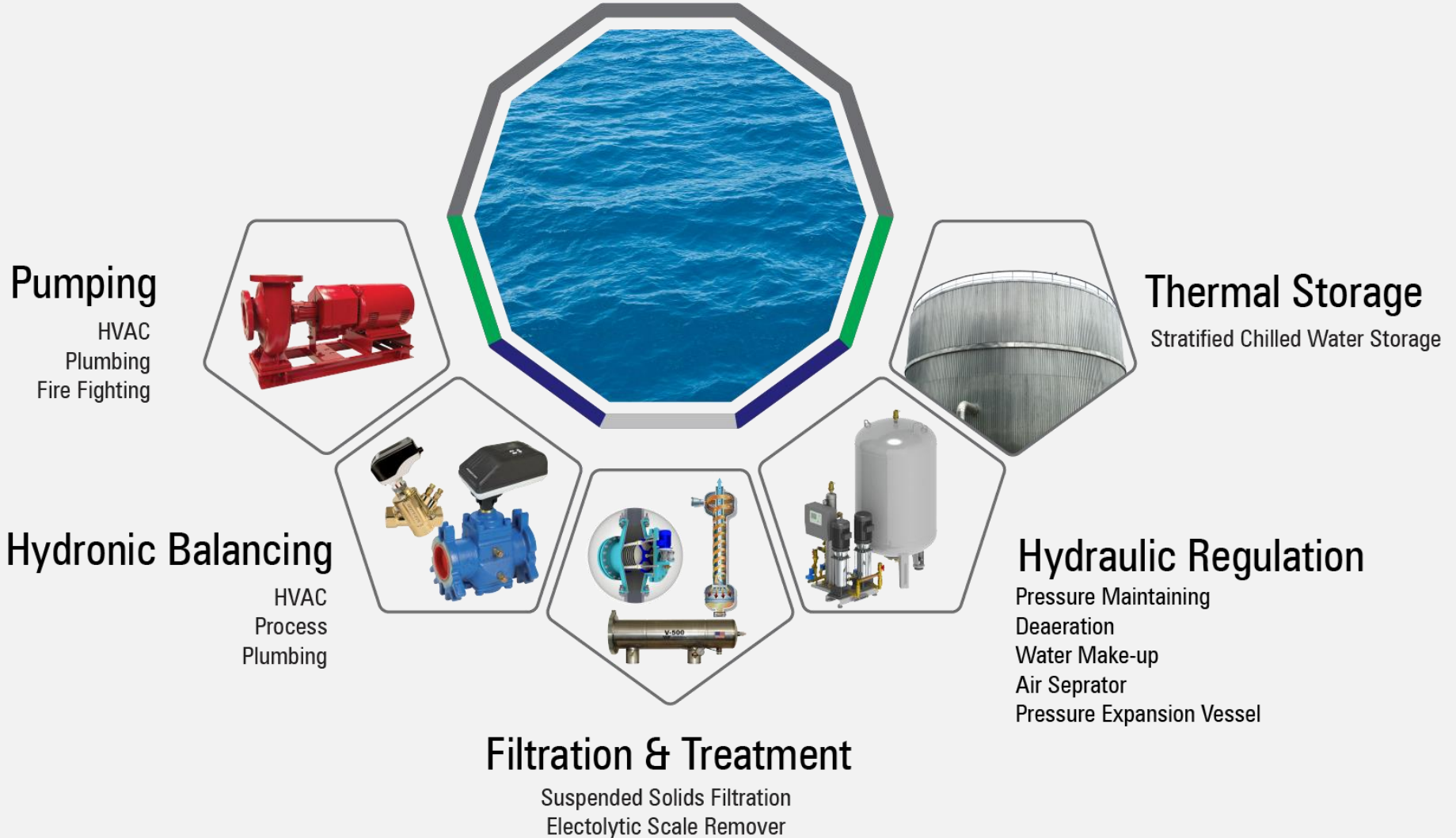
Ensavior has built enduring relationships with major contractors and corporate entities, proudly contributing to the creation of Airports, Office Complexes, IT Parks, Trade Centres, Metro Rails, Shopping Malls, Hospitals, Five-Star Hotels, Schools, and Manufacturing Facilities across the Indian sub-continent.

Our products are being used in prestigious projects including Supreme Court, Parliament House, ITPO, Delhi International Airport, Delhi Metro, Jaipur Metro, Lucknow Metro, Kolkata Metro, India International Convention Center, DLF, Westin Hotels, Coca-Cola, Qualcomm, Amazon, SIFY, Tata Group, IDBI Bank, Lodha Group, Maruti Suzuki, Google and many more.





WATER SOLUTIONS





Pumping Solutions

HVAC, Plumbing, and Fire-Fighting



Pumping Solutions

HVAC - Constant & Variable Speed Pumping



i-1510

The Next Generation
End Suction Pump –
Designed for HVAC



VSX

Double Suction
Vertical Split Case Pump



HSC3

Double Suction
Horizontal Split Case Pump



E-80 SC

Split-Coupled Vertical
In-line Centrifugal Pumps



Pumping Solution

Hydro-Pneumatic, Sewage, Drainage System

Xylem Lowara Hydro-Pneumatic Pumping Solutions

Lowara is a world leader in stainless steel pumping technology, offering solutions for Water, Waste-water, HVAC, Fire Protection and Irrigation.

Xylem Steady Sewage Pumping Solutions

Xylem Steady is an ideal pump for sewage and surface waste-water disposal. The hydraulic design of the pumps has been proven to reduce clogging and maintain efficiency.





Pumping Solution

UL listed & Non listed
Fire-Fighting Applications

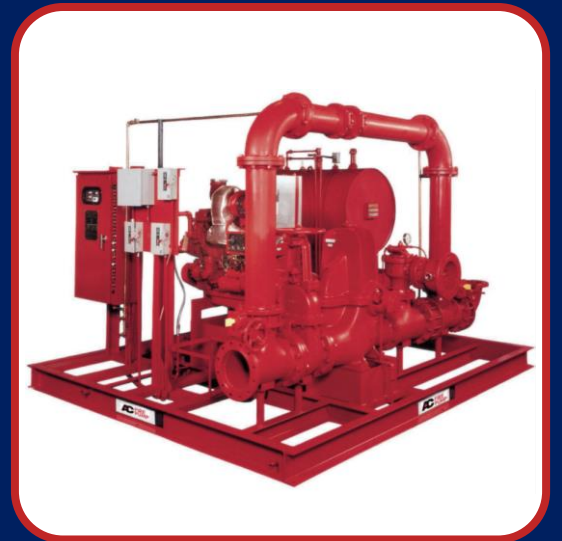
Lowara Modular Fire-Fighting Booster Solutions



Available with the use of either an electric motor or a diesel engine, depending on the type of water supply needed and the level of reliability required from the system.

Xylem A-C Fire Protection Pumping Solutions

A-C Fire Pump are available in a wide range and turnkey systems. UL listed/ FM approved Fire-fighting skid packages are also available.





PICV & Automatic Balancing Valves



Automatic Balancing Valve

For Flow Limiting Across Chillers, Condensers, Pumps, Heat Exchangers, and Cooling Towers etc.



FlowCon AHU Wafer 50-80

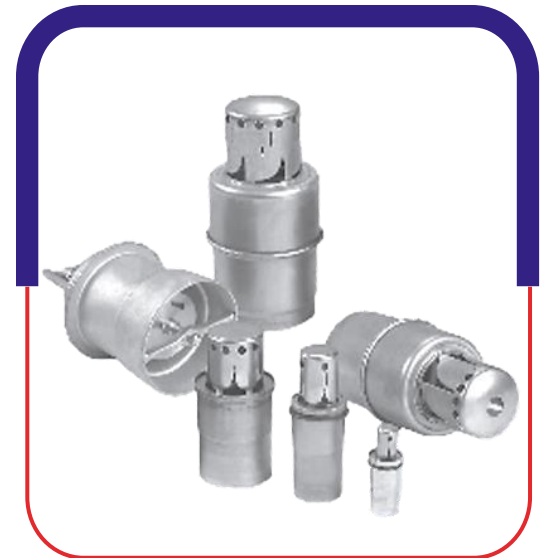
- Removable pre-set stainless-steel insert.
- Ductile iron housing.

FlowCon Wafer 100-1000

- Multiple removable pre-set stainless-steel insert.
- Ductile iron housing.

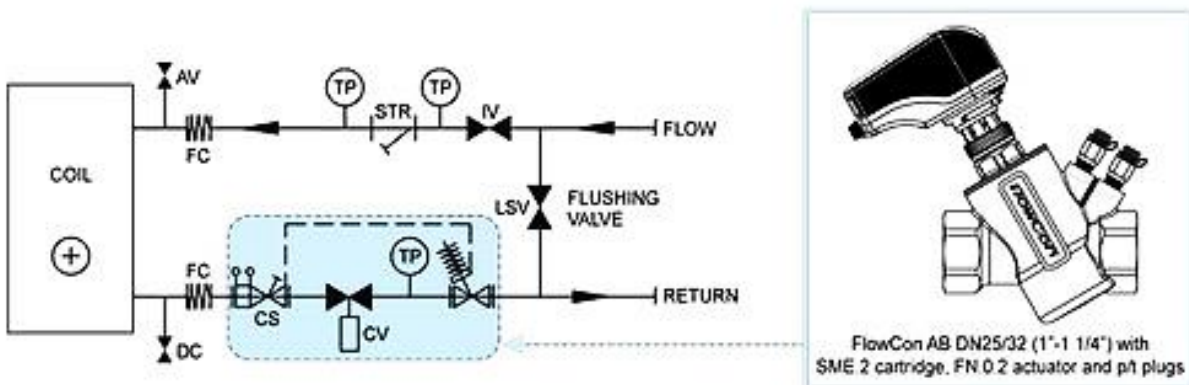
FlowCon Stainless Steel Inserts

- Factory pre-set stainless steel inserts, AISI 304.
- dP-range: 10-880 kPaD (1-128 psid).
- Flow rate: 0.021-18.9 l/sec (0.33-300 GPM) (per inserts).





3-in-1 combi valve, Modulating Control Valve, Dynamic Flow Limiter and Differential Pressure Control Valve in one body.



Pressure Independent Control Valves (PICV)

Balance the water flow in Fan Coil Units (FCU)



Model - Green



Pressure Independent Control Valves (PICV)

Balance the water flow in
Air Handling Units (AHU)



Model - SM

FlowCon SM DN 15-40

- Dynamic self-balancing modulating control valve.
- Total authority, pressure independent.
- Adjustable to 51 different maximum flow rate limits.
- Forged brass housing.



FlowCon SM DN 50-250

- New state-of-the-art user-friendly actuator.
- Dynamic self-balancing modulating control valve.
- Total authority, pressure independent.
- Adjustable to 51 different maximum flow rate limits.
- Ductile iron housing.





Chilled Water Thermal Energy Storage



Chilled Water Thermal Energy Storage System

Some Key Features of Chilled Water TES System

- Shaves off peak load, resulting in significant reduction of installed chiller capacity.
- Chilled Water backup for **Mission Critical Facilities** like; Control Rooms, Data Centers and High Tech. manufacturing.
- Demand Side Management

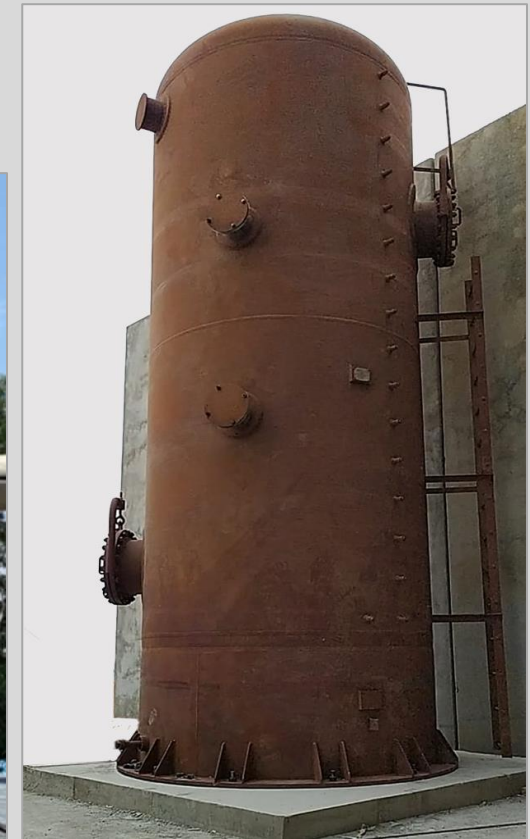
Actual photo from site





Chilled Water Thermal Energy Storage System

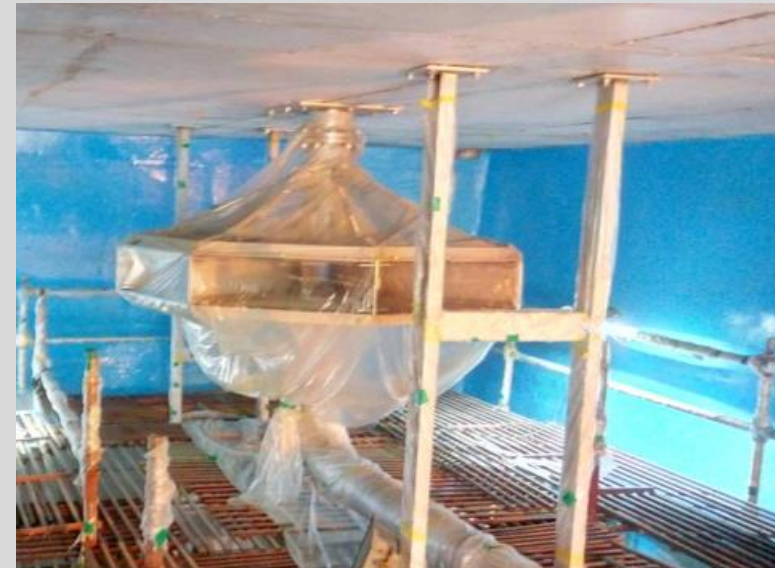
Ensavior TES Systems with Radial Disk Diffusers in Data Centres –
Bangalore / Jaipur / Chennai / Hyderabad





Chilled Water Thermal Energy Storage System

TES System of 1300 TRH in New Delhi for Demand Management –
Reduction in Chiller Installed Capacity by 25%





Automatic Tube Cleaning System (ATCS)



Automatic Tube Cleaning System (ATCS)

- ❖ Water-based cooling systems suffer from fouling of the heat exchanger surfaces, leading to a reduction in efficiency that leads to increased energy use and higher operating costs.
- ❖ The automatic tube cleaning system is a unique hydro-mechanical cleaning system that operates continuously to keep heat exchanger surfaces completely free from fouling.



ATCS for Multiple Chillers



ATCS Online



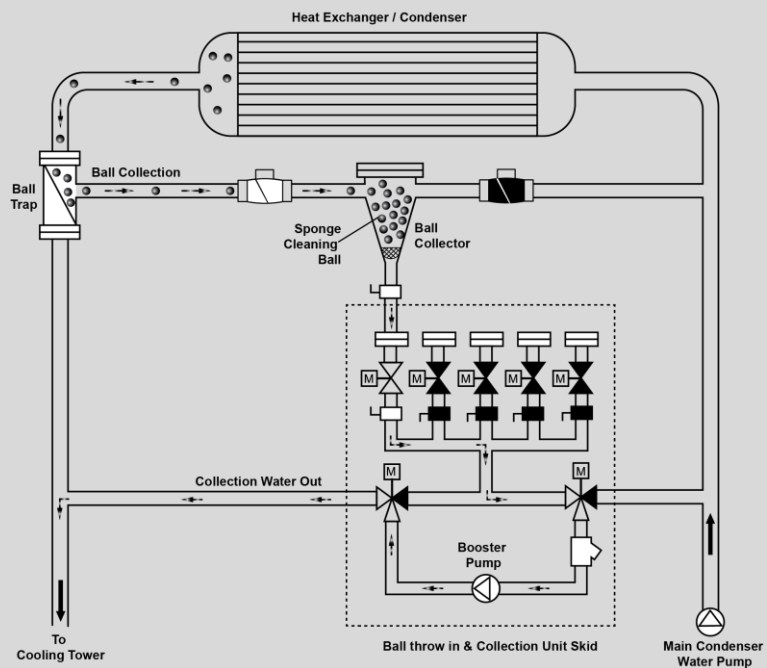
ATCS with Pump



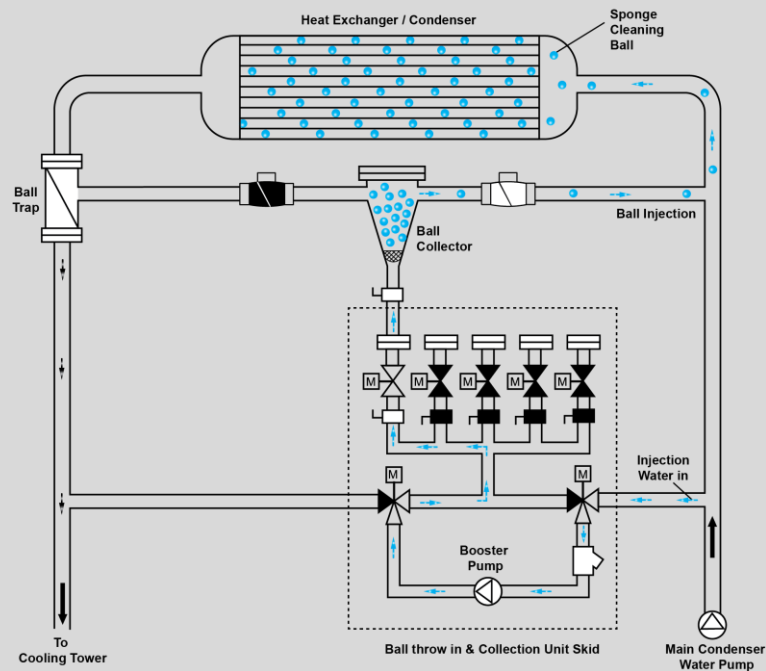
ATCS without Pump

Schematic Automatic Tube Cleaning System (ATCS)

BALL COLLECTION CYCLE



BALL INJECTION CYCLE



- NRV in Open Position
- NRV in Closed Position
- Pump Run Mode
- Motorized valve OFF Mode
- Motorized valve ON Mode
- Motorized Three Way valve
- Isolation Valve in Closed Position
- Isolation Valve in Open Position
- Y Stainer

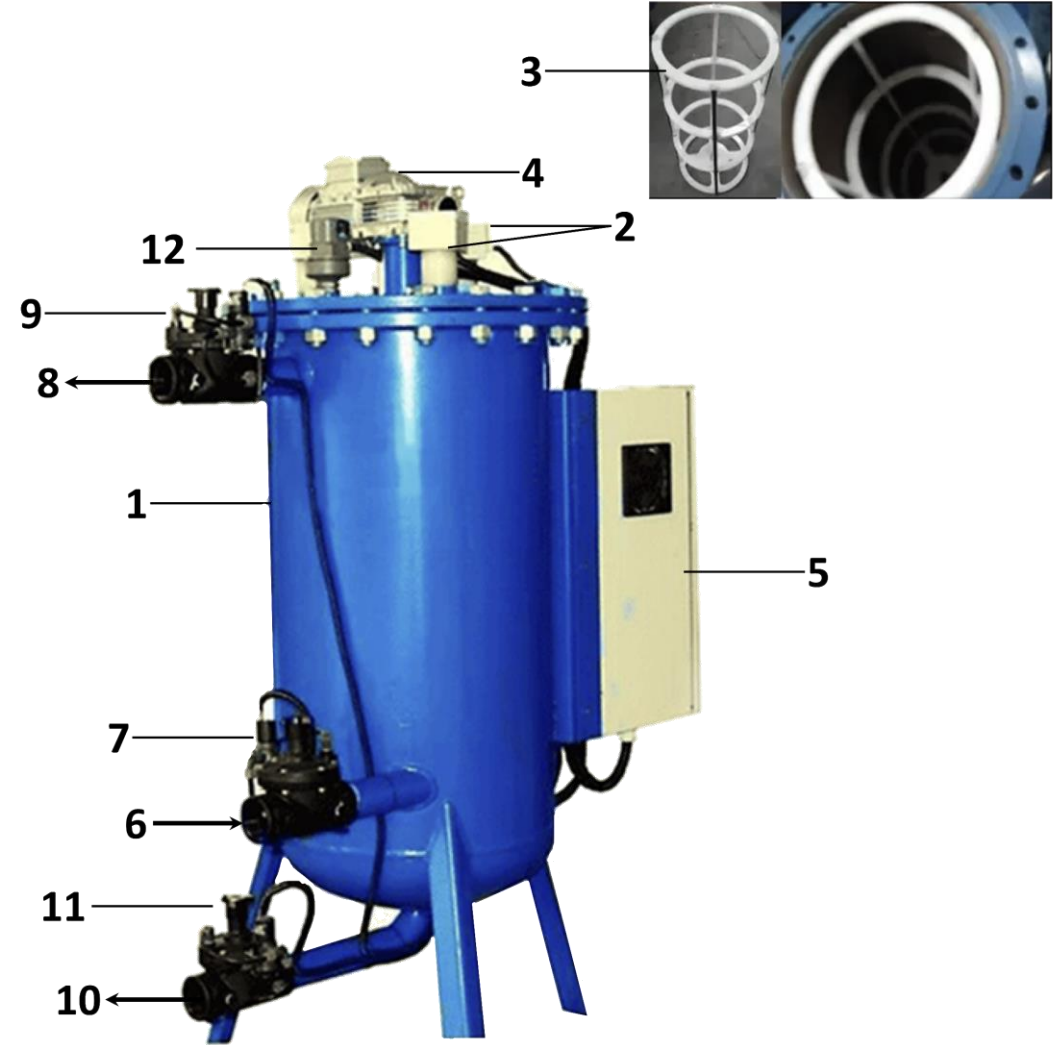


Electrolytic Scale Treatment System (EST)



Electrolytic Scale Treatment System (EST)

1. Reaction Tank
2. Electrodes
3. Scrapper (see the Inset picture)
4. Scrapper Motor
5. Control Panel
6. Inlet Connection
7. Inlet Valve
8. Outlet Connection
9. Outlet Valve
10. Drain Outlet
11. Drain Valve
12. Air Release/Intake Valve





Electrolytic Scale Treatment System (EST)

The cooling tower water treatment system faces three problems – **Scale, Corrosion and Algae**. To address these issues, Electrolytic Scale Treatment (EST) System is recommended.

Savings of up to 60% in annual treatment cost, due to:

- No need to use chemicals
- 20 - 40% saving of water
- 5 - 15% saving in electricity consumption
- 10 - 50% saving in labor costs

Additional advantages

- Exterior to the cooling tower – No changes in Cooling Tower circuit
- Very low life cycle cost
- Controllable and measurable – to ensure consistent water quality
- Creates an alkaline pH environment that prevents corrosion
- Water can be re-used for gardening without further treatment as chemical contamination is not there in the blow down.



Hydronic Regulation



Hydraulic Regulation

Multi-function Hydraulic Separators for
Air, Dirt, and Sludge



Pressure Maintaining,
Deaeration Device with
Vacuum Spray Tube and
Pressure-less Expansion Tank



Water Make-up Device



Core Team

Dinesh Semwal

Managing Director



Ankit Gupta

Associate Director-Sales (North & East)



Lalit Malhotra

Vice President – Engineering



Rajkumar Bhat

Associate Vice President (South)



Sanjay Koul

Associate Vice President (West)



Ambily Menon

Head – Corporate Affairs, Marketing & HR



Tanuj Keshwani

Chief Financial Officer



Shankkar Narayann

Head – Strategic Business Unit



Thanks!

Ensavior Technologies Pvt. Ltd.

17-A, Block-A, Sector 19, Dwarka, New Delhi-110075, INDIA | Toll Free No. +91 9658-373-373

Email: info@ensavior.com | **Web:** www.ensavior.com

Bangalore | Kolkata | Mumbai | Singapore

CIN: U72900DL2011PTC222724